

VOL. VI

HEALTH AND SAFETY PRODUCTS

4WRK[®]
we care

4MD[®]
we care

SAKO
power&safety





WORKWEAR PRODUCT CATALOGUE

CONTENT

04	WORK AND SAFETY FOOTWEAR
22	MEDICAL SHOES
22	WORKING GLOVES
38	HYGIENE
40	HEAD PROTECTION
42	HEARING PROTECTION
44	EYE PROTECTION
47	RESPIRATORY PROTECTION
49	SHOES ACCESSORIES
56	OTHER PROTECTIVE EQUIPMENT AND ACCESSORIES
60	CLOTHING
65	DISPOSABLE MEDICAL PRODUCTS

LUPUS

S1P MC

Light

Composite toe cap

TPU heel support & stability

Abrasion leather counter lining
for extra resistant



SERPENS S1P SR

Upper / lining flyknit fabric+black KPU shoe parts / abrasion resistant synthetic material heel sheet

- rubber sole, kevlar midsole
- insock: black mesh+EVA with holes
- plastic toe cap
- anti-static, anti-slip, oil-resistant, energy absorption in the heel area, resistance to ground puncture

Standards EN ISO 20345

Size 36-47



LERNA S1P SR

Upper / lining suede leather / mesh

- insole: EVA+mesh
- outsole: PU/PU
- steel toe cap, steel plate
- ansti-static, anti-slip, oil-resistant, energy absorption in the heel area, resistance to ground puncture
- SLIP-ON shoes

Standards EN ISO 20345

Size 36-47



HORNA S1 SR

Upper / lining flyknit+black TPU print / mesh

- insole: black EVA+Mesh
- outsole: PU/PU
- anti-slip, oil-resistant, anti-electrostatic, energy absorption in the heel area
- steel toe cap

Standards EN ISO 20345

Size purple: 35-41, petrol blue / celadon: 36-47



DIADEM

Upper knitting surface

- outsole: PVC
- universal use: cleaning work, warehouse work, work in service establishments and trade, work in gastronomy, light industry, gardening work

Size 36-40



MERGA

Upper knitting surface

- outsole: PVC
- universal use: cleaning work, warehouse work, work in service establishments and trade, work in gastronomy, light industry, gardening work

Size 40-47



ALRAKIS S3 SR

Upper KPU

- outsole: rubber
- Composite toe cap, kevlar plate
- slip resistance, oil-resistant sole, anti-electrostatic, energy absorption in heel area, limited permeability and water absorption, puncture resistance

Standards EN ISO 20345

Size 35-48



KARAKA SB SR

Upper 3D flyknit with microfiber

- insock: EVA
- sole: PU
- steel toe cap, slip resistance on ceramic or steel substrate
- material is lightweight and breathable

Standards EN ISO 20345

Size 36-47



NAVI SB SR

Upper oxford fabric with microfiber

- insock: EVA
- sole: PU
- slip resistance on ceramic or steel substrate
- steel toe cap

Standards EN ISO 20345

Size 39-47



MIRA SB SR

Upper / lining 3D flyknit with microfiber / durable MESH

- protection steel toe cap
- 200J steel
- PU/PU sole
- anti-slip

Standards EN ISO 20345

Size 39-47



ALASIA SB SR

Upper / lining 3D flyknit with microfiber / durable MESH

- protection steel toe cap
- 200J steel
- PU/PU sole
- anti-slip

Standards EN ISO 20345

Size 39-47



MIZAR

Upper / lining suede leather / MESH fabric

- slip-resistant, anti-static, energy absorbing in the heel area
- durable and wear-resistant
- excellent ventilation, free airflow

S1 SR

O1 SR

- oil-resistant sole
- steel toe cap providing protection against impacts up to 200J
- without toe cap

Standards EN ISO 20345

Size 36 - 47

Standards EN ISO 20347

Size 36 - 47



MENSA

Upper / lining suede leather / MESH fabric

- PU/PU sole, antislip, antistatic, energy absorbing in the heel part

SIP ESD SR

S1 SR

O1 SR

- oil-resistant
- yellow and petrol blue with a steel toe cap
- pink with a composite toe cap and kevlar plate
- with anti-puncture insole
- oil-resistant
- with metal toe cap
- without toe cap

Standards EN ISO 20345

Size SIP: 35-47
SIP PINK: 35-40
SIP M: 36-47

Standards EN ISO 20347

Size 36 - 47

Standards EN ISO 20347

Size 36 - 47



TAURUS S1P NM SR HRO

Upper / lining knitwear with TPU / MESH fabric

- protective footwear without metal elements
- EVA + Rubber sole, oil-resistant, anti-static, made by cold cementing technique
- composite toe cap (protection tested at 200J impact)
- kevlar insole (penetration resistance tested at 1100 N)

Standards EN ISO 20345

Size 39-47



VEGA SB SR

Upper / lining flyknit knitwear / MESH fabric

- lightweight and flexible
- steel toe cap providing protection against impacts up to 200J
- slip-resistant, anti-static, oil-resistant sole with heel energy absorption
- excellent ventilation, free airflow

Standards EN ISO 20345

Size 36 - 46



PAVO SB SR

Upper / lining fabric / mesh

- PU with air-cushion outsole,
- high density sponge insock
- steel toe cap, slip resistance on ceramic or steel substrate

Standards EN ISO 20345

Size 39-47



LIBRA

Upper / lining flyknit knitwear / MESH fabric

- lightweight and flexible
- slip-resistant, anti-static oil-resistant sole with heel energy absorption
- excellent ventilation, free airflow
- steel toe cap providing protection against impacts up to 200 J

Standards EN ISO 20345

Size 36 - 47

Standards EN ISO 20347

Size 36 - 47



CITALA S1 SR

Upper suede leather

- PU/PU outsole
- steel toe cap
- anti-slip, oil-resistant, energy absorption in the heel area, anti-electrostatic

Standards EN ISO 20345

Size 36-47



BELEL S1 SR

Upper suede leather

- PU/PU outsole
- steel toe cap
- anti-slip, oil-resistant, energy absorption in the heel area, anti-electrostatic

Standards EN ISO 20345

Size 36-47



FELIS S1 SR

Upper fly knitting fabric

- PU/PU outsole
- steel toe cap, slip resistance on ceramic or steel substrate, oil-resistant soles
- anti-electrostatic, energy absorption in the heel area

Standards EN ISO 20345

Size 36-47



POLLUX S3 SR

Upper / lining microfiber+TPU / sandwich mesh

- shoes with laces or quick lacing, printing + anti-impact,
- insole: HI-POLY footbed
- outsole: PU/PU
- composite toe cap and kevlar

Standards EN ISO 20345

Size



VESPER

Upper / lining suede leather / MESH fabric

- PU/PU sole, anti-slip, anti-electrostatic, energy absorbing in the heel part

SLG S1 SR

SLG 01 SR

- oil-resistant
- with metal toe cap
- without a toe cap

Standards EN ISO 20345

Size 36 - 47

Standards EN ISO 20347

Size 39 - 47



REGOR S2 LC

Upper / lining microbifer

- anti-slip sole
- oil-resistant
- anti-electrostatic
- waterproof

Standards EN ISO 20344, EN ISO 20345

Size 36 - 47



PROXIMA S3 SR HRO NM

Upper / lining split nubuck 1.6-1.8 mm / mesh

- specialised insole hypoli
- PU/RUBBER outsole
- composite toe cap, kevlar inserts
- anti-static, waterproof, anti-slip, oil-resistant outsole, energy absorption in the heel area, resistance to ground punctures, **NON METAL**
- HRO sole of the shoe is resistant to contact with high temperatures - up to 300°C

Standards EN ISO 20345

Size 36-47



PROXIMA S3 SR

Upper / lining split nubuck 1.6-1.8 mm / mesh

- specialised insole hypoli
- PU/PU outsole
- steel toe cap, steel plate
- anti-static, waterproof, anti-slip, oil-resistant, energy absorption in the heel area, resistance to ground punctures

Standards EN ISO 20345

Size 36-47



PROXIMA S1P SR

Upper / lining split nubuck 1.6-1.8 mm / mesh

- insole: EVA,
- outsole : PU/PU,
- steel toe cap, steel plate
- anti-static, waterproof, anti-slip, oil-resistant outsole, energy absorption in the heel area, resistance to ground puncture

Standards EN ISO 20345

Size 36-47



PROXIMA S3 SR

Upper / lining split nubuck / mesh

- insole: EVA,
- outsole: PU/PU
- steel toe cap, steel plate
- anti-static, waterproof, anti-slip, oil-resistant outsole, energy absorption in the heel area, resistance to ground puncture

Standards EN ISO 20345

Size 36-47



ALGOL

Upper / lining cow leather / MESH fabric

- outsole: PU
- breathability
- anti-slip
- durability, light

SB

OB

- with steel toe cap

- without a toe cap

Standards EN ISO 20345

Size 39 - 48

Standards EN ISO 20347

Size 39 - 48



HYDRA WATERPROOF

Upper suede leather with static waterproof

- sock outsole: black dual density PU&RUBBER sole
- tactical work boots

Size 39-47



CAPELLA S1

Upper bufalalo leather

- impact resistant steel toe cap
- slip resistance, oil-resistant sole, anti-electrostatic, energy absorption in the heel area

Standards EN ISO 20345

Size 39-47



PETRA S3 NM SR

Upper / lining nubuk leather / MESH fabric

- nubuk leather with enhanced waterproofing
- breathable lining preventing chafing and absorbing sweat
- safety class S3: anti-penetration insole, protective toe cap, anti-static properties

Standards EN ISO 20345

Size 39 - 47



KANG

Upper / lining smooth action leather / MESH fabric

- durability and resistance to damage
- high level of thermal comfort and breathability
- safety class S3: anti-penetration insole, protective toe cap, ant-istatic properties
- hi-poly insole provides excellent foot support and cushioning

Standards EN ISO 20345

Size 39 - 47



VOLANS

Upper / lining brown action crazy horse leather

- anti-impact heel counter
- kevlar anti-puncture textile
- FO outsole
- resistance to fuel oil

Standards EN ISO 20345

Size 39 - 47



LUPUS

Upper / lining S3 LC NM SR microfiber

S3 NM SR

- kevlar, anti-puncture textile
- anti-abrasion leather counter lining for extra wear resistant
- TPU heel support & stability
- 100% metal free

Standards EN ISO 20345

Size 39 - 47



SOLARIS

Upper / lining cowhide split leather / MESH fabric

- sole: two-stage injection PU/PU, antislip-sole, anti-static, energy-absorbing in the heel area

S3 SR

S1 SR

O1 SR

- with metal toe cap
- with metal anti-puncture midsole

- oil-resistant
- with metal toe cap

- without a toe cap

Standards EN ISO 20345

Size 36 - 47

Standards EN ISO 20345

Size 36 - 47

Standards EN ISO 20347

Size 39 - 47



SOLARIS S3 SR NM

Upper / lining cowhide split leather / MESH fabric

- anti-slip sole, anti-static, oil-resistant, energy-absorbing in the heel area
- sole: two-stage injection PU/PU
- with kevlar toe cap and kevlar antipuncture insole

Standards EN ISO 20345

Size 39 - 47



SOLARIS SIMA S1

Upper / lining smooth leather / MESH fabric

- sole: PU
- oil-resistant, anti-slip, anti-static, made by direct injection method
- insole with steel toe cap (protection tested at 200J impact)

Standards EN ISO 20345

Size 39 - 47



CASTOR

Upper / lining cowhide split leather / MESH fabric

- sole: two-stage injection PU/PU, anti-slip sole, anti-static, energy-absorbing in the heel area

S3 SR

S1 SR

O1 SR

- oil-resistant
- with metal toe cap and anti-puncture insole

- oil-resistant
- with metal toe cap

- without a toe cap

Standards EN ISO 20345

Standards EN ISO 20345

Standards EN ISO 20347

Size 36 - 47

Size 39 - 47

Size 39 - 47



AVIOR S3

Upper / lining two layer leather

- outsole: TPU sole, steel toe cap and steel plate
- anti-slip, oil-resistant, anti-electrostatic
- energy absorption in the heel area
- waterproof, antistatic
- resistance to penetration from the ground

Standards EN ISO 20345

Size 36 - 47



SIRIUS S3 NM SR

Upper / lining smooth leather / MESH fabric

- PU sole, oil-resistant, anti-slip, anti-static, made by direct injection method
- composite toe cap (protection tested at 200J impact)
- kevlar insole (penetration resistance tested at 1100 N)

Standards EN ISO 20345

Size 39 - 47



TEVEL S3

Upper / lining two layer cowhide

- steel plate
- anti-slip, oil-resistant, anti-electrostatic
- energy absorption in the heel area
- waterproof
- resistance to penetration from the ground

Standards EN ISO 20345

Size 36 - 47



IZAR S3 HRO SR



Upper / lining cowhide split leather / mesh fabric

- PU/RUBBER sole
- metal toe cap, steel anti-puncture midsole, buckle fastening
- sole resistant to contact with hot ground, slip-resistance, oil-resistant soles, anti-electrostatic, energy absorption in the heel area
- limited water permeability and water absorption

Standards EN ISO 20345

Size 39-47



DRACO S3 SR HRO

Upper / lining cowhide split leather / MESH fabric

- sole: PU/RUBBER
- anti-slip, anti-static, oil-resistant
- with metal toe cap and steel anti-puncture midsole
- sole resistant to contact with hot surface

Standards EN ISO 20345

Size 39 - 47



URUK WINTER 01 SR ❄️

Upper / lining embossed leather / artificial fur

- thermal comfort even in the greatest frosts
- PU/PU polyurethane sole is tear-resistant
- oil-resistant, anti-slip sole

Standards EN ISO 20347
Size 36 - 47



MORAVA S3 SR ❄️

Upper / lining action smooth leather / artificial fur

- composite toe cap
- kevlar plate
- artificial fur inside for thermal comfort
- reflective element increases visibility after dark
- oil-resistant, slip-resistant PU/PU polyurethane sole

Standards EN ISO 20345
Size 36 - 47



SOLARIS WINTER ❄️

01 SR cowhide split leather / faux fur
S1 SR embossed leather
S3 embossed leather

- anti-slip sole, anti-static, energy-absorbing in the heel area
- sole: two-stage injection PU/PU
- without toe
- oil-resistant
- with steel toe cap
- sole: PU/PU
- anti-slip, anti-electrostatic
- oil-resistant
- with steel toe cap
- steel plate

Standards EN ISO 20347
Size 36 - 47



CURSA

OB two layer cowhide
S1 SR two layer cowhide / steel

- sole: PU/PU
- without a toe cap
- anti-slip
- anti-slip sole, anti-static, oil-resistant, energy absorbing in the heel area
- sole: two-stage injection PU/PU
- with metal toe cap

Standards EN ISO 20347
Size 36 - 47

Standards EN ISO 20345



POLARIS SLG S1 SR

Upper / lining sanded leather / MESH fabric

- safety work sandals
- anti-slip sole, anti-static, oil-resistant, energy absorbing in the heel area
- sole: two-stage injection PU/PU
- with metal toe cap

Standards EN ISO 20345
Size 36 - 47



ATRIA S1 ESD SR

Upper / lining sanded leather / MESH fabric

- sole: two-stage injection PU/PU, anti-slip sole, anti-static, oil-resistant, energy absorbing in the heel part
- with metal toe cap

Standards EN ISO 20345
Size 36 - 47



FURUD

Durable material PVC
OB

S5

- used it for light industry, such a medical, food industry, hygiene, for cold enviroments, for electric insulation

- steel toe and midsole
- slip-resistance, oil-resistant soles, anti-static, energy absorption in the heel area, resistance to ground punctures, thermal insulation, resistant to mechanical factors, dirt and microorganisms

Standards EN ISO 20347
Size 40-47

Standards EN ISO 20345
Size 39-46

SAKO

05-002

Black waterproof microfiber
with TPU heel support

Anti-static insole

Elastic insole

Energy absorption in the heel area


POWER&SAFETY



01-102 S1 SR

Upper / lining embossed leather / MESH fabric

- sole: PU/PU two-stage injection
- with a toe cap, slip-resistance
- oil-resistant sole
- anti-electrostatic properties
- energy absorption in the heel area

Standards EN ISO 20345

Size 36-47



01-103 S3 SR

Upper embossed leather / MESH fabric

- sole: PU/PU two-stage injection
- with a toe cap, slip-resistance
- oil-resistant sole, anti-electrostatic properties
- energy absorption in the heel area, limited permeability and water absorption
- resistance to puncture from the ground

Standards EN ISO 20345

Size 36-47



01-104 S3 SR

Upper / lining embossed leather / MESH fabric

- sole: PU/PU two-stage injection
- with a toe cap, slip-resistance
- oil-resistant sole, anti-electrostatic properties
- energy absorption in the heel area, limited permeability and water absorption
- resistance to puncture from the ground

Standards EN ISO 20345

Size 36-47



03-001 F0 01 SR ESD

Upper sanded cowhide leather / MESH fabric

- outsole PU/PU, oil-resistant, anti-static, anti-slip
- anti-static properties ESD

Standards EN ISO 20347, EN 61340-5-1

Size 36-47



03-002 S1 SR ESD

Upper / lining sanded cowhide leather / MESH fabric

- outsole PU/PU, oil-resistant, anti-static, anti-slip
- with a composite toe cap
- anti-static properties ESD

Standards EN ISO 20345, EN 61340-5-1

Size 36-47



03-003 S1 SR

Upper / lining sanded cowhide leather / MESH fabric

- inner insole-Hi-POLY anatomically shaped, lightweight polyurethane foam coated with fabric MESH, antistatic
- outsole - PU/PU; double density injection oil-resistant, anti-static, anti-slip
- with composite toe cap
- antistatic properties ESD

Standards EN ISO 20345, EN 61340-5-1

Size 36-47



04-001 S3 HRO SR

Upper / lining embossed cowhide leather / MESH fabric

- outsole PU/RUBBER+HRO (up to 300°C), SR, oil-resistant, anti-static, anti-slip, double density injection
- with composite toe cap
- with kevlar anti-puncture insole

Standards EN ISO 20345
Size 36-47



04-002 S3 HRO SR

Upper / lining embossed cowhide leather / MESH fabric

- outsole PU/RUBBER-HRO (up to 300°C), oil-resistant, anti-static, anti-slip, double density injection
- with composite toe cap
- kevlar anti-puncture insole

Standards EN ISO 20345
Size 36-47



04-003 S3 HRO SR WG

Upper / lining embossed cowhide leather / MESH fabric

- flame-resistant upper and resistance to elevated temperatures (180°C)
- sole resistant to temperatures (up to 300°C)
- upper construction prevents debris from entering the footwear
- anti-slip, oil-resistant
- designed for welding

Standards EN ISO 20345
Size 36-47



04-004 S3 HRO SR

Upper embossed cowhide leather / MESH fabric

- insole-anatomical shape, made of highly absorbent EVA material, anti-static
- PU/RUBBER sole+HRO (resistant to contact with hot surface up to 300°C)
- oil-resistant, anti-static
- with composite toe cap

Standards EN ISO 20345
Size 36-47



05-001 ESD S3S

Upper black waterproof microfiber with TPU heel support; tongue /non-woven fabric

Quarter lining sandwich mesh

- insock: high elastic foam
- outsole: PU/PU
- composite toe cap
- waterproof
- anti-static, oil-resistant, energy absorption in the heel area

Standards EN ISO 20345
Size 36-47



05-002 ESD S3S

Upper black waterproof microfiber with TPU heel support; tongue /non-woven fabric

Quarter lining sandwich mesh

- insock: high elastic foam
- outsole: PU/PU
- composite toe cap
- waterproof
- anti-static, oil-resistant, energy absorption in the heel area

Standards EN ISO 20345
Size 36-47



05-003 ESD S1PS SR

Upper microfiber

- outsole : PU/PU
- composite toe cap
- textile perforation resistant midsole
- high elastic foam footbeds
- highest slip resistance
- anti-static, oil - resistant, energy absorption in the heel area

Standards EN ISO 20345

Size 36-47



06-005 S1P SR

Upper / lining KPU MESH / MESH fabric

- oil-resistant, anti-static, anti-slip sole
- sole: PU/RUBBER two-stage injection
- with a composite toe cap
- composite anti-puncture insole

Standards EN ISO 20345

Size 36-47



06-006 S3 SR HRO

Upper / lining action nubuk leather / MESH fabric

- oil-resistant, anti-static, anti-slip sole
- sole: PU/RUBBER two-stage injection
- with a composite toe cap
- composite anti-puncture insole

Standards EN ISO 20345

Size 36-47



05-004 S3S ESD SR



black waterproof microfiber with TPU heel support / tongue: black microfiber+ oxford cloth / plastic and Metal buckle with nylon lace / vamp lining: Non-woven fabric / quarter Lining: sandwich mesh

Upper / lining

- insock: High elastic foam
- outsole: PU/PU Composite toe cap
- slip-resistance on ceramic or steel substrate or both, oil-resistant soles, anti-electrostatic properties
- energy absorption in the heel area, limited permeability and water absorption, resistance to punctures from the ground

Standards EN ISO 20345

Size 36-47



05-005 S3S ESD SR



black waterproof microfiber with TPU heel support / tongue: black microfiber+ oxford cloth / plastic and metal buckle with nylon lace / vamp lining: non-woven fabric / quarter lining: sandwich mesh

Upper / lining

- insock: high elastic foam
- outsole: PU/PU: composite toe cap
- slip-resistance on ceramic or steel substrate or both, oil-resistant soles, anti-electrostatic properties,
- energy absorption in the heel area, limited permeability and water absorption, resistance to punctures from the ground

Standards EN ISO 20345

Size 36-47



05-006 S1PS ESD SR



Upper / lining microfiber

- outsole: PU/PU,
- composite toe cap, textile perforation resistant midsole,
- high elastic foam footbeds, highest slip-resistance
- slip-resistance on ceramic or steel substrate or both, oil-resistant soles, anti-electrostatic properties, energy absorption in the heel area, resistance to punctures from the ground

Standards EN ISO 20345

Size 36-47

PSL BOOTS LAMEGO S3

composite toe cap,
sole: kevlar and PU/PU

limited permeability and water
absorption

resistance to puncture
from the ground

slip-resistance, pil-resistant soles



SATELLITE S3

Upper buff nubuck black

- composite toe cap, sole: kevlar and PU/PU
- slip-resistance, pil-resistant soles
- anti-electrostatic properties, energy absorption in the heel area
- limited permeability and water absorption
- resistance to puncture from the ground

Standards brak informacji

Size 39-47



LAMEGO S3

Upper buff nubuck black

- composite toe cap, sole: kevlar and PU/PU
- slip-resistance, pil-resistant soles
- anti-electrostatic properties, energy absorption in the heel area
- limited permeability and water absorption
- resistance to puncture from the ground

Standards brak informacji

Size 39-47



BOLT MID S3

Upper buff nubuck black

- composite toe cap, sole: kevlar and PU/PU, quick lacing system
- slip-resistance, pil-resistant soles
- anti-electrostatic properties, energy absorption in the heel area
- limited permeability and water absorption
- resistance to puncture from the ground

Standards brak informacji

Size 39-47



ALLIGATOR S3 ESD

Upper buff nubuck black

- composite toe cap, sole: kevlar and PU/PU
- slip-resistance, pil-resistant soles
- anti-electrostatic properties, energy absorption in the heel area
- limited permeability and water absorption

Standards brak informacji

Size 35-50

DOVE

MEDICAL FOOTWEAR

Versality

Double layer of slip-resistant sole

Adjustable strap stabilizing the foot

Lightweight, flexibility and ventilation





HAWK

Composition TPE (thermoplastic elastomer)

- non-slip sole
- abrasion resistance
- hygiene (easy disinfection)
- lightness, flexibility and ventilation

Size 34-45

Colors



DOVE

Composition EVA foam + RB rubber

- double layer of slip-resistant sole
- lightweight, flexibility and ventilation
- adjustable strap stabilizing the foot
- versatility

Size 34-45

Colors



RAVEN

Composition EVA foam

- on-slip sole
- lightweight and flexibility
- adjustable strap stabilizing the foot
- versatility

Size 34-45

Colors



CROCS IBIS



Composition synthetic

- lightweight, durable, moisture and stain resistant
- good stabilization of the foot while walking
- ergonomic shape
- ventilation holes - airy design

Size 39-47

SHIELD

+ HYDRO

4WRK®
we care
SHIELD
+HYDRO
KS 6560
EN ISO 21420:2020 LOT no.: 2A201
EN 388:2016 CAT: II
EAC
Manufacturing date: 04/2024
3131X SIZE: 10/1X

Resistance to moisture and liquids

Versality

Breathability and comfort

Durability and long lifespan



SHIELD + ACTIVE

Material / coating nylon / spandex / 100% microfoam

- nitrile microfoam provides excellent grip and allows precision work
- durable, abrasion resistant
- comfortable, perfect fit to the hand

Standards EN ISO 21420, EN 388 (4,1,2,1,X)
Size M-XXL (8-11)



SHIELD + ACTIVE SANDY

Material / coating nylon, spandex/ microfoam

- abrasion-resistant
- microfoam coating provides breathability
- nylon and spandex for a perfect hand fit

Standards EN 388, EN ISO 21420
Size 8-11 (M-XXL)



SHIELD + ACTIVE DOTS

Material / coating nylon / spandex / 100% microfoam

- nitrile microfoam provides excellent grip and allows precision work
- durable, abrasion resistant
- comfortable, perfect fit to the hand

Standards EN ISO 21420, EN 388 (4,1,2,1,X)
Size M-XXL (8-11)



SHIELD + CUT

Material / coating HPPE, fiberglass / polyurethane

- cut-resistant glove
- high resistance to abrasion, tearing puncture
- polyurethane coating provides a precise grip on the objects held
- well-fitting to the shape of the hand
- finished with a welt

Standards EN ISO 21420, EN 388 (4,4,4,3,F)
Size M-XXL (8-11)



SHIELD + CUT FLEX

Material / coating HPPE, fiberglass / polyurethane

- high cut protection (standard C)
- use of glass fibres and HPPE
- polyurethane coating provides additional protection against mechanical damage
- use in glass and metal industries

Standards EN 388, EN ISO 21420
Size M-XXL (8-11)



SHIELD + CUT N-FORCE

Material / coating HPPE, fiberglass/polyurethane

- high resistance to cuts, abrasion, tears,
- fiberglass increases the level of cut protection,
- material is resistant to oils, greases,
- gloves are flexible and provide an excellent grip

Standards EN 388, EN ISO 21420
Size M-XXL (8-11)





SHIELD + CUT L-GRIP

Material / coating sandy latex

- high cut resistance
- sandy latex coating is distinguished by its granular, rough texture
- highly resistant to damage, tears and abrasion

Standards EN 388, EN ISO 21420
Size M-XXL (8-11)



MARIN

Material / coating polyester/nitrile

- nitrile provides good resistance to abrasion, oil and grease
- tailored cut and flexible polyester allow precise work
- coating guarantees a very good grip

Standards EN 388, EN ISO 21420
Size S-XXL (7-11)



SHIELD + BRUK

Material / coating polyester / nitrile / latex

- designed for paving works
- finished with a welt
- suitable for construction, industry and garden work

Standards EN ISO 21420, EN 388 (3,1,3,2,X)
Size XL (10)



SIROCCO

Material / coating polyester / porous latex

- porous latex provides very good grip and traction
- abrasion, tear and puncture resistant
- stretchable and flexible
- finished with a welt

Standards EN ISO 21420, EN 388 (2,1,3,2,X)
Size S-XXL (7-11)



SIROCCO SANDY

Material / coating polyester / latex safety

- polyester base guarantees perfect fit to the hand
- latex coating is resistant to abrasion, mechanical damage
- coating structure provides better grip during use

Standards EN 388, EN ISO 21420
Size M-XXL (8-11)



SIROCCO LITE

Material / coating polyester / porous latex

- the lower weight will work well for precision work
- porous latex provides a very good grip and adhesion
- resistant to abrasion, tearing and punctures
- stretchable and flexible
- finished with a welt

Standards EN ISO 21420, EN 388 (2,1,3,1,X)
Size S-XXL (7-11)





SHAMAL

Material / coating polyester / latex

- lower fabric weight means even better ventilation
- fragrance-free
- non-pressing welt
- great for precision work

Standards EN ISO 21420, EN 388 (2,1,3,1,X)

Size S-XXL (7-11)



SOLANO



Material / coating polyester / latex foam

- good grip and abrasion resistance
- polyester makes the material lightweight and does not restrict dexterity
- resistant to damage, tearing

Standards EN 388, EN ISO 21420

Size L-XL (9-10)



MONSOON

Material / coating polyester / polyurethane

- grip coated with non-slip polyurethane
- provide good working precision
- durable, abrasion and tear resistant
- flexible, well-fitting to the shape of the hand
- finished with a welt

Standards EN ISO 21420, EN 388 (3,1,2,1,X)

Size BB: XS-XXL (6-11), GG: S-XXL (7-11)



MONSOON GARDEN

Material / coating polyester / polyurethane

- they fit very well in the hand, which provides a great sense of detail
- will prove themselves in gardening
- finished with a welt
- available in many patterns
- each pair packaged with a hang tag

Standards EN ISO 21420, EN 388 (3,1,2,1,X)

Size XS(6) yellow, S(7) blue, M(8) green



BLIZZARD

Material / coating polyester / polyurethane

- provide good working precision
- guarantee safety and comfort at work
- durable, abrasion and tear resistant
- flexible, well-fitting to the shape of the hand
- finished with a welt

Standards EN ISO 21420, EN 388 (3,1,2,1,X)

Size XS-XXL (6-11)



CHINOOK

Material / coating polyester / nitrile

- thin coating provides precision work
- abrasion and tear resistant
- flexible, well-fitting to the shape of the hand
- finished with a welt

Standards EN ISO 21420, EN 388 (4,1,2,1,X)

Size S-XXL (7-11)





PAMPERO SANDY

Material / coating polyester / nitrile / latex

- the latex foam coating enhances user comfort, while the glove remains flexible
- elastic, providing excellent grip and precision
- contact with water does not cause the gloves to shrink

Standards EN ISO 21420, EN 388 (2,1,2,1,X)
Size M-XXL (8-11)



KRONA

Material / coating polyester / nitrile

- durability and abrasion resistance
- good grip and anti-slip surface flexibility, conforming to the shape of the hands
- ease of cleaning and maintenance

Standards EN ISO 21420, EN 388 (3,1,2,1,X)
Size L-XXL (9-11)



BREEZE

Material / coating polyester-cotton / 100% porous latex

- porous latex coating provides very good grip and adhesion
- durable, abrasion and tear resistant
- flexible, fits well to the shape of the hand

Standards EN ISO 21420, EN 388 (2,1,2,1,X)
Size L-XXL (9-11)



PASSAT

Material / coating polyester / nitrile

- thin coating provides precision work
- nitrile coating provides resistance to grease oil and water impermeability
- high abrasion and tear resistance
- flexible, well-fitting to the shape of the hand

Standards EN ISO 21420, EN 388 (4,1,2,1,X)
Size S-XXL (7-11)



KRONA LITE

Material / coating polyester / nitrile

- thin coating provides precision in tasks
- good grip and anti-slip surface
- flexibility, conforming to the shape of the hands
- versatility

Standards EN ISO 21420, EN 388 (2,1,2,1,X)
Size XL (10)



BREEZE LITE

Material / coating polyester-cotton / 100% porous latex

- the lower weight will work well for precision work
- porous latex coating provides very good grip and adhesion
- durable, abrasion and tear resistant

Standards EN ISO 21420, EN 388 (2,1,2,1,X)
Size L-XXL (9-11)





CAVER

Material / coating polyester-cotton / latex

- latex layer provides very good grip and adhesion
- durable, abrasion and tear resistant
- finished with a welt

Standards EN ISO 21420, EN 388 (2,1,3,1,X)
Size XL (10)



HALNY

Material / coating polyester / latex and foamed latex

- foamed latex coating provides increased abrasion resistance
- additional coating on fingertips ensures a firm grip on details
- resistant to oils and detergents
- do not shrink in contact with water

Standards EN ISO 21420, EN 388 (1,1,3,1,X)
Size S-XXL (7-11)



GALE

Material / coating polyester / porous latex

- porous latex coating provides very good grip and traction and extra protection against mechanical impacts
- great for wet and humid conditions
- lightweight and flexible for comfort and freedom of movement

Standards EN ISO 21420, EN 388 (2,1,2,1,X)
Size L-XXL (9-11)



NASHI

Material / coating polyester / porous latex

- unique, irregular shape of the grip part increases grip and safety
- deeper coating provides greater hand protection

Standards EN ISO 21420, EN 388 (1,1,2,1,X)
Size XL (10)



NORTE PRO

Material / coating cotton / nitrile

- nitrile coating on fingers and hands provides good protection and grip
- resistant to oil, grease and dirt
- soft and comfortable to wear

Standards EN ISO 21420, EN 388 (3,1,1,1,X)
Size S-XL (7-10)



SHIELD + OIL

Material / coating cotton / nitrile

- resistance to oils and liquids
- flexibility and fit
- durability and long lifespan
- protection against mechanical hazards

Standards EN ISO 21420, EN 388 (4,1,1,1,X)
Size XL (10)





BERG



Material / coating BRAK

- full PVC coating - effective protection against chemicals, oils, moisture
- smooth finish for easy cleaning, dirt does not stick to the material
- interlock cotton insert - soft and breathable material, protects hands from abrasion
- knitted cuff for a comfortable fit, prevents the glove slipping off

Standards EN 388, EN ISO 21420

Size XL (10)



SHIELD + HYDRO SANDY



Material / coating PES / nitrile

- the hydrophobic nitrile coating is resistant to water, oil and grease
- the base PES material is flexible and has excellent ventilation
- abrasion and damage resistance

Standards EN 388, EN ISO 21420

Size XL (10)



ALIZE

Material / coating polyester

- uncoated gloves
- well-fitting to the shape of the hand
- lightweight and comfortable to use
- finished with a welt

Standards EN ISO 21420, EN 388 (1,1,3,1,X)

Size S-XL (7-10)



SHIELD + HYDRO

Material / coating polyester / latex foam with double coating

- resistance to moisture and liquids
- versatility
- breathability and comfort
- durability and long lifespan

Standards EN ISO 21420, EN 388 (3,1,3,1,X)

Size L-XXL (9-11)



BISE

Material / coating cotton / nitrile

- high abrasion resistance
- full coating
- no areas exposed to potential leakage in the gripping part
- the cuff prevents the glove from pulling of the hand

Standards EN ISO 21420, EN 388 (4,1,1,1,X)

Size L-XL (9-10)



WILLY

Material / coating polyester / PVC dots

- inside of palm coated with PVC dots to improve grip and control
- very good feeling of the object being held
- stretchable and flexible
- finished with a welt

Standards EN ISO 21420

Size S-XXL (7-11)





SHIELD + ESD

Material / coating nylon, carbon fiber / polyurethane

- gloves provide protection against electrostatic surges
- layer of polyurethane only on fingertips
- durable and flexible
- extremely lightweight and comfortable to wear

Standards EN ISO 21420, EN 388 (1,1,3,1,X), EN 16350
Size XS-XXL (6-11)



SHIELD + ESD PRO

Material / coating nylon, carbon fiber / polyurethane

- gloves provide protection against electrostatic surges
- layer of polyurethane over the entire grip area provides a precise grip
- durable and flexible
- extremely lightweight and comfortable to wear

Standards EN ISO 21420, EN 388 (3,1,3,1,X), EN 16350
Size XS-XXL (6-11)



BORA WINTER ❄️

Material / coating polyester-cotton / latex

- ideal for work in low temperatures
- layer of latex provides very good grip and adhesion
- durable, abrasion and tear resistant
- finished with a welt

Standards EN ISO 21420, EN 388 (2,2,3,1,X), EN 511 (X2X)
Size L-XXL (9-11)



BURAN WINTER ❄️

Material / coating polyester-cotton / porous latex

- ideal for low temperature work
- porous latex coating for even better grip and adhesion
- durable, abrasion and tear resistant
- finished with a welt

Standards EN ISO 21420, EN 388 (2,2,4,2,X), EN 511 (X2X)
Size L-XXL (9-11)



PURGA WINTER ❄️

Material / coating polyester-cotton / porous latex

- ideal for low temperature work
- porous latex coating on both sides of the hand
- increased resistance to grease and oils
- provide very good grip and adhesion
- durable, abrasion and tear resistant, finished with a welt

Standards EN ISO 21420, EN 388 (2,2,4,2), EN 511 (X2X)
Size L-XL (9-10)



TABOR WINTER ❄️

Material / coating cowhide / denim leather

- the leather retains its properties even after it has been wet and dry
- sewing from a single sheet of leather increases durability
- hardened cuff is an additional reinforcement for the wrist
- abrasion and tear resistance

Standards EN ISO 21420, EN 388 (2,1,3,2,X), EN 511 (X3X)
Size XL/XXL (10,5)





HALNY WINTER ❄️

Material / coating polyester / latex, additional foamed latex at the fingertips

- latex coating for better grip
- tear and wear resistant
- great for cold and freezer rooms
- elastic welt keeps gloves from slipping from the hand during intensive use

Standards EN ISO 21420, EN 388 (1,2,3,1,X), EN 511 (X1X)
Size XL (10)



4DRIVER WINTER ❄️

Material / coating goatskin

- ideal for work in low temperatures
- grip part made of one piece of leather
- warming lining inside
- provides very good grip and dexterity
- durable, abrasion resistant
- creases on the wrist

Standards EN ISO 21420, EN 388 (1,2,2,1,X), EN 511 (X1X)
Size L-XXL (9-11)



LEVANTER ❄️

Material / coating polyester / latex foam

- ideal for work in low temperatures
- durable, abrasion and tear resistant
- palm fully latex-coated
- second layer of latex foam on grip area and fingertips

Standards EN ISO 21420, EN 388, (2,2,4,2,X), EN 511 (X2X)
Size XL (10)



VARDAR ❄️

Material / coating polyester / winter latex

- tear and puncture resistant
- welt keeps the gloves well on the hand
- effective protection against cold and low temperatures
- inner part of the palm completely covered with foamed latex

Standards EN ISO 21420, EN (2,1,3,2), EN 511 (X1X)
Size XL (10)



MISTRAL ❄️

Material / coating acrylic yarn / latex

- double latex coating guarantees waterproofness
- designed for outdoor and cold storage work
- high quality acrylic yarn
- elastic welt

Standards EN ISO 21420, EN 388 (2,2,3,1,X), EN 511 (X3X)
Size XL (10)



4 DRIVER

Material / coating grain leather

- white high quality gloves with an elegant
- appearance fine grain leather provides a very good grip and dexterity
- high resistance to abrasion and tearing
- thanks to the creases in the wrists, it fits the hand perfectly

Standards EN ISO 21420, EN 388 (2,1,4,2,X)
Size M-XXL (8-11)





4 DRIVER PRO

Material / coating goatskin / cowhide leather

- the design of the glove has spot leather reinforcements
- the wrist is creased, which provides a better fit and prevents dirt from getting in
- particularly well suited for welding

Standards EN ISO 21420, EN 388 (2,1,3,1,X)

Size L-XXL (9-11)



BOLIVAR

Material / coating poliester / white goatskin

- resistant to abrasion and cuts
- reinforced grip part
- ideal for work in harsh conditions, in contact with oil and slippery substances

Standards EN 388, EN ISO 21420



DENALI

Material / coating cow split leather

- anatomical shape of the thumb
- bazy protecting seams, very good grip

Standards EN ISO 21420, EN 388 (3,1,4,2,X)



ARARAT

Material / coating cotton / goatskin leather

- provide a very good grip and traction
- abrasion and tear resistant
- flexible, well adapted to the shape of the hand
- finished with a rubber welt with velcro closure

Standards EN 21420, EN 388 (2,1,4,2,X)

Size M-XXL (8-11)



GRANITE

Material / coating elastic fabric / goatskin leather

- high quality gloves with elegant design
- fine goatskin provides very good grip and dexterity
- abrasion and tear resistant closure

Standards EN 21420, EN 388 (2,1,4,2,X)

Size S-XXL (7-11)



FUJI

Material / coating 100% denim / cowhide split leather

- lined inside
- gloves reinforced with leather, and the thumb and index finger made entirely of leather
- very durable, resistant to tearing, abrasion and puncturing
- cuff finished with piping

Standards EN 21420, EN 388 (3,2,4,3,X)

Size XL/XXL (10,5)





LAVA

Material / coating one piece sheepskin / split leather

- protective gloves for welders with a length of 35 cm
- index finger fully covered with sheepskin
- provide protection against burns
- long cuff and welt at wrist level
- tough and durable, at the same time soft and flexible

Standards EN 21420, EN 388 (2,1,2,2,X), EN 407 (4,1,2,X,4,X), EN 12477 Typ A
Size XL (10)



VOLCANO

Material / coating one piece sheepskin / split leather

- protective gloves for welders
- provide protection against burns
- long cuff, upper part reinforced with split leather
- tough and durable, at the same time soft and flexible

Standards EN 21420, EN 388 (2,1,2,1,X), EN 12477 Typ A, EN 407 (4,1,2,X,4,X)
Size XL-XXL (10-11)



MAGMA

Material / coating one piece sheepskin / split leather

- protective gloves for welders
- provide protection against burns
- long cuff, upper part reinforced with split leather
- tough and durable, at the same time soft and flexible

Standards EN 21420, EN 388 (2,1,3,1,X), EN 12477 Typ A, EN 407 (4,1,2,X,4,X)
Size XL-XXL (10-11)



SPARK BLUE

Material / coating cowhide leather sewing with kevlar threads and white lining outside

- for welding
- protection of hands against heat, sparks and sharp edges

Standards EN ISO 388 (3,2,4,3,X), EN 407 (4,1,2,X,4,X)
Size XXL (10,5)



TAI

Material / coating amara leather / grippy, forway nylon, preen

- velcro closer
- for work in the workshop, construction site, industry

Standards EN ISO 388 (2,1,1,1,X)
Size L-XXL (9-11)



OYU

Material / coating amara leather / grippy, forway nylon, preen

- velcro closer
- for work in the workshop, construction site, industry

Standards EN ISO 388 (2,1,2,1,X)
Size XL (10)





ASO

Material / coating amara leather / grippy, forway nylon, elastin

- velcro closer
- for work in the workshop, construction site, industry

Standards EN ISO 388 (2,1,4,1,X)
Size XL (10)



SHIELD + IMPACT



Material / coating PE / foamed nitrile

- gloves are anti-scratch and anti-impact
- finished with a Velcro welt
- upper part made with TPR technology, protecting knuckles and fingers against impact additional stitching and reinforcing material between thumb and index finger

Standards EN 388, EN ISO 21420
Size



HELM 35 / 40



Material PVC fully coated

- Smooth finish, interlock cotton liner,
- full coating protects against chemicals, oils, moisture
- long cuff provides additional protection for forearms
- cotton liner protects against abrasions

Standards EN ISO 21420
Size XL (10)



PALI HYBRID

Material / coating polyester / nitrile

- coating of the inner part with nitrile provides a secure grip
- resistant to tearing, abrasion and grease or oil
- resistant to moisture
- dark color is resistant to dirt

Standards EN ISO EN ISO 21420, EN 388 (2,1,2,1,X)
Size L-XXL (9-11)



LESTE

Material / coating polyester / nitrile

- nitrile coating provides resistance to fats, grease or oils
- high abrasion resistance factor
- welt protects against slipping of the glove from the hand

Standards EN ISO 21420, EN 388 (4,1,2,2,X)
Size M-XXL (8-11)



TABOR

Material / coating leather / stretch canvas fabric

- grip part made of one piece of leather
- excellent insulation against the cold
- stiffened cuff and soft leather

Standards EN ISO 21420, EN 388 (2,1,2,2,X)
Size XL/XXL (10,5)





ELGON

Material / coating cow sued leather / fabric

- the upper side of the cuff has a sewn-in ribbon, which prevents the glove from slipping from the hand
- index finger and thumb have additional leather reinforcement
- cuff stiffened with rubber
- high resistance to abrasion, tearing and puncturing

Standards EN ISO 21420, EN 388 (3,2,3,3,X)
Size XL/XXL (10,5)



HELICON

Material / coating split cowhide / striped canvas fabric

- canvas fabric is mechanically durable and abrasion-resistant
- the sewn-in tape on the cuff ensures that the glove fits snugly on the hand and does not slip during work
- the gripping part equipped with lining has better thermal insulation
- high tensile strength

Standards EN ISO 21420, EN 388 (3,2,4,3,X)
Size XL/XXL (10,5)



CERIUM

Material / coating 100% cotton

- the fabric is breathable, allowing the skin to breathe
- the gloves do not electrify
- high manuality at work
- prove suitable as an insert under heavier latex glove

Standards EN ISO 21420, EN 388 (0,1,1,X)
Size S-XL (7-10)



LOGAN

Material / coating goat leather

- soft leather provides a good grip
- rubber welt with Velcro closure allows for a precise fit on the wrist
- anatomical thumb layout
- bily protective seams

Standards EN ISO 21420, EN 388 (2,1,4,2,X)
Size L-XL (9-10)



KAMET

Material / coating fabric / leather

- the glove leather is soft, providing dexterity, comfort, and safety during work
- an elastic band over the cuff prevents the glove from slipping during use
- the stiff and thicker cuff protects against the ingress of contaminants
- high tear resistance factor

Standards EN ISO 21420, EN 388 (2,1,4,2,X)
Size XL/XXL (10,5)



GALENA

Material / coating 100% cotton jersey

- the tailored fit ensures proper sensitivity and precision in work
- the elastic cuff prevents the glove from slipping off the hand
- designed for light warehouse tasks, sorting, packaging and stocking

Standards EN ISO 21420, EN 388 (0,1,1,X), EN 407 (X,1,X,X,X)
Size L-XL (9-10)





BERYL

Material / coating 100% cotton

- medium thickness fabric provides a very good feel
- does not irritate the hand and allows the skin to breathe
- sewn-in thumb for maximum precision at work
- use as an insert under other protective gloves

Standards EN ISO 21420, EN 388 (0,1,1,1,X)
Size S-XL (7-10)



PERITE

Material / coating 100% cotton / PVC

- the flexible fabric fits the hand very well
- PVC micro-spotting on the grip area provides excellent grip
- wrist crease ensures that the glove does not slip from the hand
- the fabric allows the skin to breathe

Standards EN ISO 21420, EN 388 (0,1,2,1,X), EN 407 (X,1,X,X,X)
Size S-XL (7-10)



JASPER

Material / coating 100% cotton / PVC

- spotted PVC tabs increase grip and provide even better grip
- elastic welt prevents the glove from slipping from the hand
- effective protection of the epidermis against abrasion and dirt
- elastic welt at the wrist

Standards EN ISO 21420, EN 388 (1,1,2,1,X), EN 407 (X,1,X,X,X)
Size XL (10)



TRONA

Material / coating cotton / polyester / PVC / elastane

- seamless construction
- strong uigination
- PVC overlay is non-slip and provides better grip
- breathable seamless backing

Standards EN ISO 21420, EN 388 (1,1,3,1,X), EN 407 (X,1,X,X,X)
Size XL (10)



LAZURITE

Material / coating polyester and cotton, polycotton tress / PVC dots

- high level of tear protection
- ergonomic and comfortable
- fits the hand well
- wide application

Standards EN 388 (1,1,3,1,X), EN 407 (X,1,X,X,X,X)
Size XL-XXL (10-11)



KERRIA

Material / coating latex

- protection against mechanical hazards
- compliance with EU requirements
- durability and longevity
- excellent dexterity and tactile sensitivity

Standards EN ISO 21420, EN 388 (1,0,2,0,X)
Size S-XL (7-10)





MAPLE

Material / coating nitrile

- protection against mechanical hazards
- protection against chemical hazards
- protection against microbiological agents
- durability and resistance to abrasion

Standards EN ISO 21420, EN ISO 388 (3,1,0,1,X), EN 374-5, EN 374-1 (A,J,K,L,P,O,T)
Size S-XXL (7-11)



FLAX

Material / coating neoprene / cotton

- high quality long protective, chemical, acid-resistant gloves
- grip surface with anatomical shape
- provide freedom of movement and comfort of the work performed

Standards EN ISO 21420, EN ISO 374-1, EN ISO 374-2, EN ISO 374-5, EN 388 (2,1,2,1,X)
Size S-XL (7-10)



4GRIP

Material / coating nitrile

- powder-free disposable gloves in black or orange color
- extremely durable and comfortable
- textured diamond structure of the grip part
- provide protection against chemicals and microorganisms

Standards EN ISO 21420, EN ISO 374-1, EN ISO 374-4, EN ISO 374-5 455-1, 455-2
Size M-XXL (8-11)



4MD
we care

ALOE

Material / coating nitrile

- disposable diagnostic gloves in blue color
- textured fingertips for better grip
- powder free

Standards EN ISO 14971, EN ISO 15233-1, EN 1041, EN 455-(1-3), EN ISO 10993-(1/5/10)
Size S-XL (7-10)



4MD
we care

IRIS

Material / coating nitrile

- disposable diagnostic gloves in black colour
- textured fingertips for better grip
- powder free

Standards EN ISO 14971, EN ISO 15233-1, EN ISO 10993-(1/5/10), EN 455-(1-3), EN 1041
Size S-XL (7-10)



4MD
we care

DAISY

Material / coating 54% polyvinyl chloride / 44% dioctyl terephthalate / 2% calcium-zinc stabilizer

- transparent disposable diagnostic gloves
- latex-free and powder-free
- vinyl material facilitates free
- medical product class I

Standards EN ISO 14971, EN ISO 15233-1, EN ISO 10993-(1/5/10), EN 455-(1-3), EN 1041
Size S-XL (7-10)





4MD
we care

TULIP

Material / coating 54% polyvinyl chloride / 44% dioctyl terephthalate / 2% calcium-zinc stabilizer

- transparent disposable diagnostic gloves
- latex-free and powder-free
- vinyl material facilitates free glove changing even with wet hands
- medical product class I

Standards EN ISO 14971, EN ISO 15233-1, EN ISO 10993-(1/5/10), EN 455-(1-3), EN 1041

Size S-XL (7-10)



4MD
we care

CROCUS

Material / coating latex

- powdered
- medical product
- for use in the cosmetics industry, logistics, and household work
- universal shape fits right and left hand

Size S-XL (7-10)



4CLEAN

LUPINE



Material synthetic nitrile

- resistant, flexible, durable
- hypoallergenic
- universal use

Standards EN ISO 374-1+A1, EN ISO 374-5, EN ISO 374-4

Size S-XL (7-10)



4MD
we care

KINGFA

Material / coating nitrile

Colors ● ● ●

- disposable diagnostic gloves
- not contain latex, natural rubber and powder
- medical product class I
- personal protection product category III

Standards EN ISO 21420, EN ISO 374-1, EN ISO 374-4, EN ISO 374-5, EN 455

Size XS-XL (6-10)



THE TOWELS

Provides excellent comfort,
functionality and effective drying

Soft and delicate to the touch

Perfectly absorbs moisture
and dries quickly



BIZET 500 GSM

Dimension 50x100 cm / 70x140 cm
Material 100% cotton

- the towel provides a soft and gentle touch
- durable, absorbs water well and dries quickly

Standards EN 14697:2007, EN 15598:2008, EN ISO 13938-1:2020-05, EN ISO 13934-1:2013-07, OEKO-TEX



DORSET 400 GSM

Dimension 50x100 cm / 70x140 cm
Material 100% cotton

- provides excellent comfort, functionality and effective drying
- soft and delicate to the touch
- perfectly absorbs moisture and dries quickly

Standards EN 14697:2007, EN 15598:2008, EN ISO 13938-1:2020-05, EN 12127:2000, EN 1773:2000, EN ISO 13934-1:2013-07, EN ISO 5077:2011, EN ISO 3759:2011, EN ISO 6330:2022-06, EN ISO 13936-02:2005, OEKO-TEX



TEXEL 500 GSM

Dimension 50x100 cm / 70x140 cm
Material 100% cotton

- towel provides softness and delicate touch
- absorbs water well, dries quickly
- excellent durability

Standards EN 14697:2007, EN 15598:2008, EN ISO 13938-1:2020-05, EN 12127:2000, EN 1773:2000, EN ISO 13934-1:2013-07, EN ISO 5077:2011, EN ISO 3759:2011, EN ISO 6330:2022-06, EN ISO 13936-02:2005, OEKO-TEX



CORMO 400 GSM

Dimension 50x100 cm / 70x140 cm
Material 100% cotton

- provides excellent comfort, functionality and effective drying
- soft and delicate to the touch
- perfectly absorbs moisture and dries quickly

Standards OEKO-TEX



MERINO 500 GSM

Dimension 50x100 cm / 70x140 cm
Material 70% cotton / 30% polyester

- excellent quality and functionality
- soft, dense and extremely absorbent

Standards OEKO-TEX



GALWAY 400 GSM

Dimension 50x100 cm / 70x100 cm
Material 70% cotton / 30% polyester

- excellent quality and functionality
- gentle pleasure on the skin
- effective moisture absorption

Standards OEKO-TEX

HELMET GUNNAR

Excellent impact resistance

Lightweight and durable

Adjustable size

Strength and wear resistance

4-point strap



ERIK

Material HDPE

- excellent impact resistance
- adjustable size, convenient fit
- strength and wear resistance
- 4-point strap

Standards EN 397:2012+A1 **Size** 53-62 cm

Colors



LEIF

Material ABS shell with 100% polyester fabric

- shock protection
- size adjustment
- convenient and lightweight construction for long use without discomfort
- multifunctional

Standards EN 812 **Size** 58-62 cm



GUNNAR

Material ABS

- excellent impact resistance
- adjustable size, convenient fit
- strength and wear resistance
- 4-point strap

Standards EN 397:2012+A1 **Size** 53-62 cm

Colors



ROLLO

Material ABS shell with 100% polyester fabric

- shock protection
- size adjustment
- convenient and lightweight construction for long use without discomfort
- multifunctional

Standards EN 812 **Size** 58-62 cm



RAGNAR

Material HDPE

- excellent impact resistance
- adjustable size, convenient fit
- strength and wear resistance
- 4-point strap

Standards EN 397:2012+A1 **Size** 53-62 cm

Colors



EDGAR 2 IN 1

Material ABS inner shell / cotton fabric / polyblister / foam spacer

- shock protection
- size adjustment
- multifunctional
- lightweight and comfortable
- ABS inner liner can be removed
- ventilation holes

Standards EN 812 **Size** 55-66 cm

Colors



THOR

Material ABS

- to work in industry
- comfortable clasp
- soft mandibular band

Standards EN 397:2012+A1 **Size** 53-63 cm

Colors

ECHO

FM-3

High level of noise protection

Effectiveness against impulse noise

Adaptability to different noise frequencies

Protection against continuous noise
SNR=34 dB, H=35 dB, M=31 dB, L=35 dB



ECHO FM-1A

Material ABS+PC / SPONGE + PVC

- high level of noise protection
- effectiveness against impulse noise
- adaptability to different noise frequencies
- protection against continuous noise
SNR=33 dB H=34 dB M=31 dB L=23 dB

Standards EN 352-1

Size regulated



ECHO FM-2

Material ABS+PC / SPONGE + PVC

- high level of noise protection
- effectiveness against impulse noise
- adaptability to different noise frequencies
- protection against continuous noise
SNR=33 dB H=34 dB M=31 dB L=23 dB

Standards EN 352-1

Size regulated



ECHO FM-3

Material ABS+PC / SPONGE + PVC

- high level of noise protection
- effectiveness against impulse noise
- adaptability to different noise frequencies
- protection against continuous noise
SNR=34 dB H=35 dB M=31 dB L=25 dB

Standards EN 352-1

Size regulated



ECHO FM-1D

Material ABS / stainless steel

- high suppression efficiency
- bright color means better visibility in the workplace
- wide and soft cushions reduce pressure around the ears

Standards EN 352-3

Size universal



ECHO EC-1001A

Material polyurethane foam

- high level of noise protection (85 dB)
- adaptability to different ear canal sizes
- hygienic and easy to clean
- skin-safe materials

Standards EN 352-1

Size universal



ECHO EC-1001A-C

Material polyurethane foam / PVC

- high level of noise protection (85 dB)
- adaptability to different ear canal sizes
- hygienic and easy to clean
- skin-safe materials
- protection in the form of a PVC

Standards EN 352-1

Size universal

FRANK

SAFETY GLASSES

Advanced safety glasses

Effective protection against small

Splinters, dust and other
workplaces dangers

Provide protection and comfort

Optical class I



ALVARO

Material polycarbonate

- advanced safety glasses
- excellent protection against small splashes dust and other workplace dangers
- **optical class I**

Standards EN 166

Size universal



BONO

Material polycarbonate

- advanced safety glasses
- excellent protection against small splashes dust and other workplace dangers
- **optical class III**

Standards EN 166

Size universal



BONO SHADES

Material polycarbonate

- advanced safety glasses
- excellent protection against small splashes, dust and other workplace dangers
- **optical class III**

Standards EN 166

Size universal



CHRIS

Material polycarbonate

- advanced safety glasses
- excellent protection against small splashes dust and other workplace dangers
- **optical class I**

Standards EN 166

Size universal



ELVIS

Material polycarbonate

- advanced safety glasses
- excellent protection against small splashes, dust and other workplace dangers
- provide protection and comfort
- **optical class I**

Standards EN 166

Size universal



FRANK

Material polycarbonate

- advanced safety glasses
- excellent protection against small splashes, dust and other workplace dangers
- provide protection and comfort
- **optical class I**

Standards EN 166

Size universal



MICK

Material polycarbonate

- advanced safety glasses
- excellent protection against small splashes, dust and other workplace dangers
- provide protection and comfort
- **optical class II**

Standards EN 166

Size universal



OZZY

Material polycarbonate

- advanced safety glasses
- excellent protection against small splashes, dust and other workplace dangers
- provide protection and comfort
- **optical class I**

Standards EN 166

Size universal



DUKE

Material PVC

- advanced safety goggles
- effective protection, comfort and clarity of vision in difficult conditions
- innovative design equipped with four ventilation valves prevents evaporation and moisture accumulation on the lens coating
- **optical class II**

Standards EN 166

Size universal



ELTON

Material PVC

- advanced safety goggles
- effective protection, comfort and clarity of vision in difficult conditions
- innovative design equipped with four ventilation valves prevents evaporation and moisture accumulation on the lens coating
- **optical class I**

Standards EN 166

Size universal



GORDIE

Material polyurethane foam

- foldable design
- angle adjustment
- equipped with a forehead protector
- padding in the forehead area
- especially good for sawing, trimming, mowing and cutting

Standards EN 1731

Size universal



WAYNE

Material polyurethane foam / PVC

- wide angle of face shield
- the front part is lined with sponge
- angle adjustment allows to set the shield in any position
- for workers operating chainsaws or scythes
- effective protection against splinters and liquid splashes

Standards EN 166

Size universal

RESPIRATORY PROTECTION

4WRK[®]
we care

FACE MASK FM FS 233V FFP3 NR D

Disposable protective mask
with unique graphen technology

Ear mount



FFP2 P&B

Material nonwoven

- 5-layer filtering mask with ear attachment

Standards EN 149+A1

Size universal



FM FS 16V FFP1 NR D

Material nonwoven

- FFP1 shaped respirator with a valve without a nose clip
- attached with a head strap

Standards EN 149+A1

Size universal



FM FS 17V FFP1 NR D

Material nonwoven

- FFP1 shaped respirator with a valve with a nasal aspirator
- attached with a head strap

Standards EN 149+A1

Size universal



FM FS 20V FFP2 NR D

Material nonwoven

- FFP2 shaped respirator with a valve without a nasal aspirator
- attached with a head strap

Standards EN 149+A1

Size universal



FM FS 21V FFP2 NR D

Material nonwoven

- FFP2 shaped respirator with a valve with a nasal aspirator
- attached with a head strap

Standards EN 149+A1

Size universal



FM FS 223V FFP2 NR D

Material needle-punched PES / PP nonwoven and protective covering

- protection of the respiratory tract against moderately toxic solid particles
- durability and wearing comfort
- adjustable strap allows for precise mask fitting
- exhalation of air through a special breathing valve

Standards EN 149+A1

Size universal



FM FS 233V FFP3 NR D

Material PES / PP nonwoven and protective covering

- respiratory tract protection against air pollutants
- durability and safety
- adjustable strap allows for easy mask fitting
- suitable for soldering or welding work

Standards EN 149+A1

Size universal



FM FS 630V FFP3 NR D

Material nonwoven

- FFP3 shaped respirator with a valve with a nasal clip
- attached with a head strap

Standards EN 149+A1

Size universal



FM FS 30V FFP3 NR D

Material nonwoven

- FFP3 shaped respirator with a valve with a nasal clip
- attached with a head strap

Standards EN 149+A1

Size universal

SHOES

INSOLES

Free airflow

Absorb shock while walking

Prevent excessive foot perspiration
and bacterial growth

High durability and wear resistance



TOE COVER

Material steel / embossed leather

- injury protection
- durability and wear resistance
- resistance to various hazards
- amortization and comfort

Size universal



LACES 100 / 120

Material cotton

- durability and endurance
- universal; they are suitable for many types of shoes, both sports and casual, making them versatile and practical

Size 100 / 120 cm



INS-EVA

Material MESH + EVA

- free airflow
- absorb shock while walking
- prevent excessive foot perspiration and bacterial growth
- high durability and wear resistance

Size 36-47



INS-EVA AS

Material MESH + EVA + latex

- free airflow
- absorb shock while walking
- adapts to the shape of the foot
- prevent excessive foot perspiration and bacterial growth
- high durability and wear resistance

Size 39-47



INS-FELT

Material felt

- excellent thermal insulation
- high softness and comfort when walking
- moisture resistance
- natural antibacterial properties

Size 39-47



INS-FOAM

Material polyurethane + highly flexible latex

- high flexibility and cushioning
- high durability and wear resistance
- anatomical adaptation to the shape of the foot
- antibacterial and antifungal properties

Size 39-47



INS-MESH

Material MESH

- high breathability
- lightweight, providing comfort without additional weight on the feet
- reduction of excessive foot perspiration
- flexibility and fit to the shape of the foot

Size 39-47



INS-MESH EVA

Material MESH+ EVA

- high breathability
- absorb shock when walking
- reduction of excessive foot perspiration
- flexibility and fit to the shape of the foot

Size 39-47



INS-PULATEX

Material polyurethane + latex

- excellent cushioning
- antibacterial and antifungal properties
- anatomical adaptation to the shape of the foot
- flexibility and cushioning
- self-cutting lines

Size 38-45



INS-SPORT

Material MESH + EVA + latex

- free airflow
- absorb shock when walking
- adapts to the shape of the foot
- prevent excessive foot perspiration and bacterial growth
- high durability and wear resistance
- self-cutting lines

Size 40-47



INS-MEMO PRO

Material memory foam with Hi-poly

- shock absorption and anti-slip
- breathable and sweat absorbent
- high quality and risk-free
- comfortable soft and highly elastic

Size universal - one size printing line 22-46m



INS-MEMO

Material fabric, memory foam

- memory foam insole
- foot-friendly, adapts to the shape of the foot
- provides adequate air circulation
- insoles have orthopaedic memory

Size 35-36, 37-38, 39-40, 41-42, 43-44, 45-46



INS-FELT G

Material felt fabric

- skin-friendly
- long-lasting
- fits all shoe sizes
- soft cushioning comfort

Size universal - one size fits all with size printing line 36-46



INS-RUN YB

Material fabric EVA

- relieve pressure on the foot
- suitable for all seasons
- stabilise the foot

Size 36-39, 40-46



INS-RUN GB

Material fabric PU

- excellent cushioning
- support for the foot in all footwear
- resistance to deformation

Size S 34-37, M 38-41, L 42-45, XL 44-48



INS-ACTIVE WB

Material fabric foam, latex

- contoured insole prevents the foot from moving sideways
- excellent stability and walking comfort
- effective shock absorption
- non-structural structure has cushioning properties, air circulates better in the shoe

Size 36-37, 38-39, 40-41, 42-43, 44-45, 46-47



INS-THERMO

Material non-woven felt, sponge, aluminium foil

- provide enhanced thermal insulation
- absorb moisture
- relieves pressure of the foot on the ground
- particularly suitable for the winter-autumn season

Size universal - one size printing line 36-46m



INS-STERILE

Material fabric latex

- double-layered construction - latex and cotton fabric
- effective protection of feet against bacteria, fungi, yeasts and mites
- perforated surface provides air circulation
- latex layer prevents the insole from moving around in the shoe
- suitable for all types of shoes

Size universal - one size printing line 36-46m



INS-COCO

Material net cloth, bottom: EVA, front sticker: coconut palm fiber, back sticker: silicone honeycomb, heel cup: TPU

- mesh material for breathability and good air circulation
- EVA foam is responsible for cushioning, the insole is flexible
- coconut fibre acts as a natural antibacterial and antifungal material
- silicone honeycomb absorbs shocks
- heel stabilising element

Size 35-40, 41-46

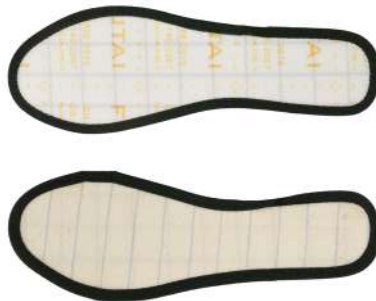


INS-ATHLET

Material fabric PU

- shock absorption and non-slip
- breathable and sweat absorbent
- high quality and risk-free
- comfortable soft and highly elastic

Size universal - one size printing line 22-46m



INS-KEV

Material anti-static materials: polymer fibers, stainless steel wire

- anti-static properties: protects the wearer from static electricity buildup
- anti-puncture design protects the foot from the ground
- effective puncture protection, durable and resistant to damage

Size 36-47



INS-FIT BLO

Material PU

- polyurethane is a durable material that guarantees comfort and cushioning when walking
- the insole is characterized by durability and flexibility
- perfectly adapts to the shape of the foot
- reduces pressure on the instep and joints

Size 39-47



INS-AIR

Material EVA

- the EVA material effectively absorbs shocks, so that joints, muscles and spine are not stressed
- they adjust to the shape of the feet
- the material is waterproof
- great thermal insulation
- resistant to deformation, honeycomb structure

Size 39-47



INS-SENTINEL BEIGE

Material cow leather, gel

- soft leather and gel cushioning provide comfort and pressure relief
- reduces chafing and prevents blisters
- improves the fit of the shoe and prevents heel slippage

Size universal



INS-GUARDIAN BLACK

Material cow leather, gel

- soft leather and gel cushioning provide comfort and pressure relief
- reduces chafing and prevents blisters
- improves the fit of the shoe and prevents heel slippage

Size universal



INSOCKS NY-500

Material 100% polyester

- soft and warm nonwoven fabric
- corduroy finish
- effective protection against cold and moisture
- doesn't limit freedom of movement

Size 40-47



SOCKS SNEAKER

Material 24% cotton / 68% polyester / 5% acrylic / 3% elastane

- short work socks
- large amount of cotton provides wearing comfort
- socks are characterized by durability, flexibility and elasticity

Standards OEKO-TEX

Size 41-45



SOCKS QUARTER

Material 22% cotton / 73% polyester / 4% acrylic / 1% elastane

- middle work socks
- large amount of cotton provides wearing comfort
- socks are characterized by durability, flexibility and elasticity

Standards OEKO-TEX

Size 41-45



SOCKS HIGH

Material 22% cotton / 72% polyester / 4% acrylic / 2% elastane

- high work socks
- large amount of cotton provides wearing comfort
- socks are characterized by durability, flexibility and elasticity

Standards OEKO-TEX

Size 41-45

KNEE PAD LOGGERHEAD

Excellent shock absorbtion

Ergonomic shape

Knee compatibility

Durability



CARETTA

Material EVA foam

- effective knee protection
- lightweight material
- knee shape adaptation
- durability

Standards EN 14404+A1

Size universal



BOA

Material 100% polyester

- belt for work pants
- black with black metal buckle

Size universal



MAMBA

Material 100% polyester

- belt for work pants
- black with black metal buckle

Size universal



MUSK

Material plastic coating / polyester fabric / PE foam

- excellent cushioning
- durability and abrasion resistance
- contoured design
- outer shell made of durable PVC

Standards EN 14404+A1

Size universal



COBRA

Material 100% polyester

- belt for work pants
- black with black metal buckle

Size universal



LOGGERHEAD

Material polymer blend / gel / PVC / polyester

- excellent shock absorption
- ergonomic shape
- knee compatibility
- durability

Standards EN 14404+A1

Size universal



TAIPAN

Material 100% Polyester

- black elastic belt
- plastic buckle

Size universal



ANACONDA



Material 100% Poliester

- black elastic belt
- black metal buckle

Size universal



LUX REFLECTIVE HARNESS



Material plastic

- worn on the chest improve the user's visibility,
- universal use
- stretchable, fits well to the body, does not restrict movement
- vertical and horizontal adjustment



COVERALL

w19

Material 100% polypropylene

- surface weight: 50 g/m²
- disposable protective suit
- it has a zipper on the back
- hood and sleeves have comfortable welts
- the product belongs to the individual protection equipment category I

Standards PPE Category I: EN ISO 13688, OEKO-TEX
Size S-XXXL

w20

Material 67% polypropylene / 28% polyethylene breathable / 5% adhesive layer

- hydrophobic
- the waist, hood and sleeves use comfortable welts
- and has a zipper on the front



LILY SMS

Material 100% PP

- disposable surgical medical kit
- medical product

Size S-XXL

35 g/m²

Color ● ● ●

40 g/m²

Color ●

43 g/m²

Color ●



APRON F1

Material 100% polypropylene

- surface weight: 40 g/m²
- disposable protective apron
- it has comfortable welts on the sleeves and binding at the waist and collar
- the product belongs to the individual protection equipment category I

Standards PPE Category I: EN ISO 13688, OEKO-TEX

Size S-XXXL

Color ○ ● ● ● ● ● ●



BARRIER - LDPE APRONS



Material polyethylene LDPE

Weight 22.5 ± 0.5 g/pc

Thickness 20 μm

- tied at the waist
- high resistance to rips and tears
- approved for contact with food
- intended for industries: chemical, cosmetic, agricultural, food, industrial



SHIELD - HDPE APRONS

Material polyethylene HDPE
Weight 8 ± 0.5 g/pc
Thickness 10 µm

- disposable, tied at the waist
- high resistance to rips and tears
- approved for contact with food
- protect against dirt: water, liquids, cosmetics and grease

Colors



SHIELD PRO - HDPE APRONS

Material polyethylene HDPE
Weight 13.5 ± 0.5 g/pc
Thickness 16 µm

- disposable, tied at the waist
- high resistance to rips and tears
- approved for contact with food
- protect against dirt: water, liquids, cosmetics and grease

Colors



ANTISPLASH PROTECTIVE FOIL

Dimension 55 cm x 20 m, 110 cm x 20 m, 140 cm x 20 m, 180 cm x 20 m, 220 cm x 20 m, 270 cm x 20 m

- protection of interior elements from damage
- protection against harmful effects of water and against paint splashes
- renovation and repair works
- damage-resistant

Colors



4CLIP

Material plastic

- glove holder
- quick fastening
- easy to use
- versatility

Size universal



GAUKE

Composition: assortment of adhesive bandages, individual dressings, adhesive tape, emergency blanket, wound dressing, elastic bandage, compress, moist towelette, triangular bandage, scissor, vinyl glove, disposable medical mask

- versatility
- effective protection and first aid
- compact size and portability
- high-quality materials

Standards
 Bandage patch set - DIN 13019-E
 Individual dressing - DIN 13151-G/K/M
 Bandage tape - DIN 13019-A
 Triangular sling - DIN 13168-D
 Scissors - DIN 58279-A
 Vinyl gloves - DIN EN 455
 Protective mask - EN 14683
 Type Bandage sling - DIN 13152-A
 Elastic bandage - DIN 61634-FB 6



100 m



100 m



100 m



WARNING TAPE

Dimension 75 mm, length color RW 100 / 200 / 500 m / length color BY 100m

Material polyethylene

- visual warning
- area protection
- terrain marking
- high durability

■ **WINTER JACKET 6IN1**
AUROLA

Reflective color increases
visibility and safety

6in1 jacket - can be worn in 6 variations

Windproof, waterproof, stand up well
to low and high temperatures

Does not absorb moisture

Wide range of different pockets for storage

Hood tucked into the collar



AURORA WINTER JACKET ❄️

Material PES, PU / weave 300D Oxford

- reflective color increases visibility and safety
- 6-in-1 jacket - can be worn in 6 variations
- windproof, waterproof, stands up well to low and high temperatures, does not absorb moisture
- wide range of different pockets for storage
- hood tucked into the collar

Standards EN ISO 20471* *for yellow and orange HV colours

Size Pink: XS-M Yellow / orange: M-2XL

Colors



VIRGA RAIN JACKET

Material PU/PES / tricot

- the 190 g/m2 tricot knit fabric gives the jacket a flexible and soft feel
- resistant to bending in low temperatures
- the jacket has an extended back that covers the back well
- the material doesn't absorb water
- a drawstring hood combined with a high collar is a tight covering for the head and neck
- reflective strip for hood adjustment

Standards EN 13688, EN 343

Size M-XXXL

Colors



VIRGA APRON

Dimension 120x120 cm / 120x90 cm

Material PVC / polyester fabric

- the material is resistant to disinfectants, fats, digestive juices and enzymes
- the apron is waterproof
- there is an adjustable strap at the neck
- belt tied at the back

Colors



FROST JACKET

Material flannel / taffeta

- button-down closure
- neckline finished with a padded collar
- two capacious pockets
- extended cut
- insulated inside

Size S-XXXL



VIRGA RAIN TROUSERS

Material PU/PES / tricot

- the tricot knit fabric makes the pants soft and flexible
- material doesn't absorb water
- the cut does not restrict movement when walking
- material resistant to bending at low temperature

Standards EN 13688, EN 343

Size M-XXXL

Colors



TEMPEST RAIN JACKET

Material PVC

- the tricot knit fabric gives the jacket elastic and stretch properties
- water does not soak into the fabric
- durable, resistant to damage or tearing
- comfortable, does not restrict movement while working

Standards EN 343

Size M-XXXL



TEMPEST RAIN COAT

Material PVC

- water does not soak into the material
- ventilation system on the back
- zippered closure and additional wind protection napkin
- hood with circumference adjustment
- basic protection against minimal risk factors

Standards EN 343

Size M-3XL




OLAF HAT

without reflective stripe

Material 100% acrylic

- comfortable and convenient
- protects against burring, light
- abrasion and severe weather conditions
- well-fitted and durable

Colors 
Standards OEKO-TEX
Size universal

with reflective stripe

Material 100% acrylic

- great protection from dirt, cold, wind and rain
- fits well to the head
- sewn-in reflective element increases visibility in the workplace
- great for road work or low visibility areas


Colors 



OLAF HAT LED

Material 100% acrylic

- effective protection against dirt, cold, wind and rain
- built-in flashlight provides better visibility after dark
- LED light source is energy efficient and has a longer life span
- LED can be charged via USB port
- light adjustment functions - bright, medium or pulsating

Standards OEKO-TEX
Size universal
Colors 



BABE CAP 5001

Material 100% cotton twill

- 175 gsm,
- 5 panels cap
- lining on front, velcro at back

Size universal



LOU CAP 6002

Material 100% cotton twill

- 270 gsm
- 6 panels cap
- 10x10 heavy brushed cotton
- metal buckle and hole

Size universal



TED CAP 569

Material neon polyester with reflective edge and combination

- velcro at back
- 6 panels cap

Size universal



LUNA REFLECTIVE SAFETY VEST

Material 100% polyester

- work attire increases visibility after darkness falls
- the vest is year-round
- weather resistant
- velcro closure

Standards EN ISO 20471

Size HV Y, HV O: S-3XL Blue, red, green, navy: M-3XL

Colors



METIS REFLECTIVE T-SHIRT

Material 100% polyester

- thanks to the bird-eye structure, the T-shirt is breathable, wicks away moisture well
- collar and cuffs are made of welt
- reflective tape increases visibility while working

Standards EN ISO 20471

Size S-3XL

Colors



PROTEUS JACKET

Material 100% polyester

- bird-eye fabric texture has great air circulation
- well-fitted cut
- sewn-in tapes increase visibility at work
- cuffs and collar are made of durable ribbing

Standards EN ISO 20471

Size S-3XL

Colors



CALLISTO REFLECTIVE T-SHIRT

Material 100% polyester

- great air circulation thanks to bird-eye fabric
- reflective tape further increases visibility and safety at work
- ribbing in the collar increases the durability of the shirt

Standards EN ISO 20471

Size S-3XL

Colors



OBERON REFLECTIVE T-SHIRT

Material 100% polyester

- bird-eye fabric structure guarantees great circulation
- welt finish on cuffs and collar
- sewn-in reflective tape provides better visibility in the workplace
- durable and resistant to abrasion

Standards EN ISO 20471

Size S-3XL

Colors



ALASKA THERMOACTIVE SET

Material plain knitting (66% polyamide, 28% polyester, 6% elastane)

- 220 gsm
- thermoactive clothing set – top and pants made of high-quality fabric that ensures thermal comfort and freedom of movement even during intense activities
- thermoactivity: efficiently wicks moisture away, keeping the skin dry
- elasticity: perfect body fit due to the elastane content

Size S-XXXL



HORNET SWEATPANTS



Material 65% cotton / 35% polyester

- designed for minimal dangers
- elastic waistband, adjustable with a drawstring
- finish with a welt influences the comfort of use
- on the knees and thighs there is reinforcement
- in the form of additional fabric

Standards EN 13688

Size S-XXXL



HERA SHIRT



Material 100% cotton

- buttoned
- open chest pocket
- buttoned cuffs

Size S-XXXL



T-SHIRT

Material 100% cotton
85% cotton, 15% viscose - GREY MELANGE

- workwear that protects against dirt and minimal risk factors
- no side seams
- high comfort even on very hot days
- do not irritate the skin

Standards OEKO-TEX

Size S-3XL



DISPOSABLE MEDICAL PRODUCTS

4MD[®]
we care

DISPOSABLE **MEDICAL PRODUCTS**

Safe and hygienic

High quality and comfort

Durable and practical

For professionals and patients



TOUCH - HDPE

Material polyethylene HDPE

- **Weight/pc: 0,6 g**
- disposable, fits both right and left hand
- high resistance to tearing and ripping
- approved for contact with food
- for home and professional use

Size universal



DOCTOR CAP WITH TIE

Material PP 25 gsm

- a lightweight and breathable non-woven polypropylene fabric, thin and disposable
- tie-off straps for a better fit
- hair protection in medical and laboratory settings

Size universal

Colors 



BOUFFANT CAP

Material PP 12 gsm

- elastic Band: Ensures a secure fit for different head sizes
- medical Field: Hospitals, laboratories – infection prevention
- food Industry: Ensures hygiene in food processing and handling
- cosmetics and SPA: Maintains cleanliness in beauty and hair salons
- electronics: Protects from contamination in cleanroom environments

Size universal

Colors 



MOB CAP

Material PP 10 gsm

- medical Sector: Protection against contamination in hospitals, laboratories, and during medical procedures.
- food Industry: Prevents hair contamination in food processing and packaging.
- cosmetics and SPA: Maintains hygiene in beauty salons, hairdressing, and spa treatments.
- electronics Industry: Protects against dust and contamination in clean environments.
- pharmaceutical Sector: Ensures hygiene during drug manufacturing.
- home Use: Useful for cleaning, cooking, or other activities requiring hygiene.

Size universal

Colors 



BEARD COVER

Material PP 10 gsm

- PP polypropylene lightweight and breathable,
- skin safe, elastic band for comfortable wearing and better fit
- prevents contamination, for food, pharmaceutical, medical and laboratory industries

Size universal

Colors 



CPE SHOE COVER

Material CPE 2.5 gsm

- CPE-chlorinated polyethylene, waterproof and durable
- protectors are ultralight and disposable
- universal, for any type of footwear
- protection in medicine, food industry, laboratories and during cleanup
- prevents transmission of contaminants

Size universal

Colors 



PP SHOE COVER WITH ANTI-SKID LAYER

Material PP 40 gsm

- made of PP polypropylene are durable and lightweight,
- anti-slip layer increases adhesion to the ground,
- elastic band provides a better fit and prevents the protector from slipping off
- Food industry, pharmaceutical industry, hospitals, laboratories, areas requiring sterility

Size universal

Colors 




PE SLEEVE COVER

Material PE 3 gsm

- disposable
- fits both right and left hands
- finished with elastic on both sides
- for use in health care, food and pharmaceutical industries

Size universal

Colors  



ISOLATION GOWN

Material PP 25, 35 gsm

- PP polypropylene is lightweight and breathable,
- tie at the neck and waist
- sleeves finished with an elastic band or cuff
- provides an excellent barrier against liquids and dirt
- medical industry, laboratories, sterile areas

Size universal

Colors 



PATIENT GOWN 1

Material PP 40 gsm

- inserted through the head, it provides freedom of movement,
- disposable, protects against contamination
- designed for hospitals, clinics, diagnostic tests

Size universal

Colors 



PATIENT GOWN 2

Material PP 40 gsm

- tied with straps at the neck and waist, allows you to adjust the fit
- disposable, protects against contamination
- designed for hospitals, clinics, diagnostic tests

Size universal

Colors 



COLONOSCOPY PANTS

Material PP 40 gsm

- airy, lightweight medical non-woven fabric
- disposable, elastic waistband for a better fit, use for diagnostics and endoscopic procedures

Size universal

Colors 



DISPOSABLE BED SHEET



Material Non-woven PP/PE

with elastic band

without elastic band

- Made of non-woven PP/PE
- Hygienic, protect against dirt and bacterial
- Breathable, easy to use, lightweight, easy to put on and dispose of

Size 200 x 90 cm

Colors ●



THERMO PLUS BLANKET



Dimension 160x210 cm

Material metallic PET film

- application: Ideal for first aid, maintaining body warmth, and protecting against hypothermia or overheating
- silver side reflects body heat, helping to retain warmth in cold conditions
- gold side protects against overheating by reflecting sunlight

Colors ●

EXPLANATIONS OF STANDARDS AND SYMBOLS

CE The product meets the requirements of the so-called directives „New Approach“ of the European Union



The label for textiles tested for harmful substances. It provides a benchmark for textile safety, from yarn to finished product.

Number of pieces in the foil pack



Number of pieces / pair per carton



• agriculture and livestock



• medical and cosmetic industry



• building



• ecology and special waste disposal



• electrical industry



• gardening



• heavy industry



• hydraulic



• light industry



• logistics industry



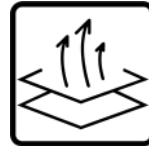
• services & maintenance



• petrochemical industry



• electrical



• breathable



• cold protection



• cut resistance

SHOE SIZE

shoe size	36	37	38	39	40	41	42	43	44	45	46	47	48
insole length (cm)	23,99	24,66	25,33	25,99	26,66	27,33	28,00	28,66	29,33	30,00	30,66	31,33	32,00

INSOLE SIZE

shoe size	36	37	38	39	40	41	42	43	44	45	46	47	48
insole length (cm)	23,80	24,47	25,13	25,80	26,47	27,13	27,80	28,47	29,13	29,80	30,47	31,14	31,80

REGULATION 2016 / 425

The Directive on Personal Protective Equipment (PPE) was enacted in April 2016, replacing Directive 89/686, which had been in effect since 1995. The main changes include:

- uniform application in all member states of the European Union,
- type examination certificate (AET) is valid for 5 years,
- easy access to EU declaration of conformity,
- standardization of requirements for notified laboratories.

EN 21420

The main criteria for protective gloves are:

- safety of use,
 - dimensional stability,
 - effectiveness in maintaining dexterity,
 - material composition of gloves.
 - packaging, storage, maintenance and cleaning methods
- Provide information to users on operating instructions.

EN 388

Gloves designed for protection against mechanical hazards are adapted to the changing requirements of the technical glove market, which takes into account the EN 2016 standard. In situations where gloves subjected to intensive use cause significant wear of the test blade in accordance with EN 388, we recommend a test using the TDM method, in accordance with ISO 13997. This approach results in the introduction of a new marking system:

- | | |
|-------------------------|--|
| 1 - Abrasion resistance | 4 - Puncture resistance |
| 2 - Cut resistance | 5 - Cut resistance according to standard 13997 |
| 3 - Tear resistance | |

EN 12477

Protective gloves for welders are evaluated on the basis of the results of tests conducted in accordance with EN 407, and then classified into two categories:

Type A: Providing higher thermal protection

Type B: Characterized by greater agility

EN ISO 20347:2012

Personal protective equipment - occupational footwear (without protective toe cap).

EN 407

Gloves that provide protection against thermal risks.

- 1 - Resistance to fire
- 2 - Resistance to contact with high temperature
- 3 - Resistance to convective heat
- 4 - Resistance to radiant heat
- 5 - Resistance to small splashes of liquid metal
- 6 - Resistance to large splashes of liquid metal

Resistance to contact with high temperature:

Level 1 - Manipulation of a 100OC element for at least 15 seconds

Level 2 - Manipulation of a 250OC element for at least 15 seconds

Level 3 - Manipulation of a 350OC element for at least 15 seconds

Level 4 - Manipulation of a 500OC element for at least 15 seconds

EN ISO 20345:2011 / 2013

Personal protective equipment - the safety footwear with woe caps designed in order to provide protection against hit which is tested at the energy level of 200J.

EN ISO 20349-2: + A1:2020

Personal protective equipment - footwear protecting against risks in foundries and welding.

EN ISO 613440-5-1:2016

Personal protective equipment - ESD footwear.

EN 397

Specifies requirements for safety helmets worn in industry and other workplaces where there is a risk of head injury. The main criteria include:

- impact resistance,
- penetration resistance,
- resistance to low and high temperatures,
- resistance to chemicals.

The standard aims to ensure that safety helmets used in workplaces meet appropriate safety standards and provide effective protection against head injuries.

EN 812

The main criteria for protective bump caps are:

- safety of use,
- dimensional stability,
- effectiveness in maintaining agility,
- material composition of helmets
- packaging, storage, maintenance and cleaning methods.

The standard is intended to ensure that safety helmets used in workplaces where the risk of head injury is mainly due to impacts with hard surfaces or objects meet certain safety standards and provide protection and comfort to wearers.

EN 352

The standard specifies general requirements for protective headphones to reduce noise and protect workers hearing in workplaces. The main criteria are:

- headphones classification,
- delivering information to users,
- fitness and comfort.

Labeling:

SNR - a value representing the overall noise attenuation level (dB)

H - noise attenuation level at high frequencies (dB)

M - noise attenuation level at mid frequencies (dB)

L - noise attenuation level at low frequencies (dB)

EN 166

It defines the requirements for eye and face protection and classifies different types of protective glasses and face shields. Below is a general description of this standard:

- classification of eye and face protection,
- construction requirements,
- material and optical coatings,
- labeling,
- fitness and comfort.

EN ISO 20347:2012

Personal protective equipment - occupational footwear (without protective toe cap).

EN ISO 613440-5-1:2016

Personal protective equipment - ESD footwear.

EN 407

Gloves that provide protection against thermal risks.

- 1 - Resistance to fire
- 2 - Resistance to contact with high temperature
- 3 - Resistance to convective heat
- 4 - Resistance to radiant heat
- 5 - Resistance to small splashes of liquid metal
- 6 - Resistance to large splashes of liquid metal

Resistance to contact with high temperature:

Level 1 - Manipulation of a 1000C element for at least 15 seconds

Level 2 - Manipulation of a 2500C element for at least 15 seconds

Level 3 - Manipulation of a 3500C element for at least 15 seconds

Level 4 - Manipulation of a 5000C element for at least 15 seconds

EN ISO 20345:2011 / 2013

Personal protective equipment - the safety footwear with toe caps designed in order to provide protection against hit which is tested at the energy level of 200J.

EN ISO 20349-2: + A1:2020

Personal protective equipment - footwear protecting against risks in foundries and welding.

EN 397

Specifies requirements for safety helmets worn in industry and other workplaces where there is a risk of head injury.

The main criteria include:

- impact resistance,
- penetration resistance,
- resistance to low and high temperatures,
- resistance to chemicals.

The standard aims to ensure that safety helmets used in workplaces meet appropriate safety standards and provide effective protection against head injuries.

EN 166

It defines the requirements for eye and face protection and classifies different types of protective glasses and face shields. Below is a general description of this standard:

- classification of eye and face protection,
- construction requirements,
- material and optical coatings,
- labeling,
- fitness and comfort.

EN 812

The main criteria for protective bump caps are:

- safety of use,
- dimensional stability,
- effectiveness in maintaining agility,
- material composition of helmets
- packaging, storage, maintenance and cleaning methods.

The standard is intended to ensure that safety helmets used in workplaces where the risk of head injury is mainly due to impacts with hard surfaces or objects meet certain safety standards and provide protection and comfort to wearers.

EN 352

The standard specifies general requirements for protective headphones to reduce noise and protect workers hearing in workplaces. The main criteria are:

- headphones classification,
- delivering information to users,
- fitness and comfort.

Labeling:

SNR - a value representing the overall noise attenuation level (dB)

H - noise attenuation level at high frequencies (dB)

M - noise attenuation level at mid frequencies (dB)

L - noise attenuation level at low frequencies (dB)

Michał Jeżewski

SALES MANAGER

e-mail: michal@polishtextilegroup.com

Mariusz Warda

PRODUCT MANAGER

e-mail: mariusz@polishtextilegroup.com

CROATIA SLOVENIA

phone: +385 99 377 2572

e-mail: vlado@polishtextilegroup.com

THE CZECH REPUBLIC SLOVAKIA

phone: +48 534 483 428

e-mail: gabriel@polishtextilegroup.com

HUNGARY

phone: +36 304 662 116

e-mail: attila.sz@polishtextilegroup.com

ROMANIA

phone: +40 711 956 978

e-mail: cristian@polishtextilegroup.com

ITALY

phone: +39 351 851 7057

e-mail: office.it@polishtextilegroup.com

LITHUANIA

LATVIA

ESTONIA

phone: +37 068 553 811

e-mail: andrius@polishtextilegroup.com

SPAIN

phone: +34 722 691 485

e-mail: office.es@polishtextilegroup.com

PORTUGAL

phone: +351 252 147 972

phone: +351 914 760 433

e-mail: office.pt@polishtextilegroup.com

GREECE

phone: +306 987 240 898

e-mail: george@polishtextilegroup.com

OTHER COUNTRIES

Regional Sales Manager:

Danyal Aziz

phone: +48 537 728 208

e-mail: danyal@polishtextilegroup.com

SALES DEPARTMENT

Michał Wójcik

REGIONAL SALES MANAGER

tel.: +48 606 988 965

e-mail: michal.w@polishtextilegroup.com

Piotr Podbielski

REGIONAL SALES MANAGER

tel.: +48 534 482 146

e-mail: piotr@polishtextilegroup.com

Provinces:

Świętokrzyskie
Pomorskie
Lubuskie
Łódzkie

tel.: +48 534 431 323

e-mail: justyna@polishtextilegroup.com

Śląskie
Wielkopolskie
Podlaskie
Warmińsko - Mazurskie

tel.: +48 531 551 295

e-mail: marcin@polishtextilegroup.com

Podkarpackie
Małopolskie
Lubelskie
Zachodniopomorskie

tel.: +48 531 235 954

e-mail: mateusz@polishtextilegroup.com

Mazowieckie
Dolnośląskie
Kujawsko - Pomorskie
Opolskie

tel.: +48 530 947 354

e-mail: monika.l@polishtextilegroup.com

SALES NETWORK



PEGETE D.O.O.
40 Dalmatinska st.,
11000 Beograd, Palilula
SERBIA
milos@polishtextilegroup.com
phone: +38 162 293 766



POLSKA GRUPA TEKSTYLNA Sp. z o. o.
ul. Zeusa 27, 01-497 Warsaw
POLAND
Trade Office:
Warszawska 21,
16 - 070 Choroszcz
POLAND
www.polishtextilegroup.com
office@polishtextilegroup.com
<http://b2b.polishtextilegroup.com/en/>



PGT SOUTH AMERICA TEXTIL LTDA
Av. Paulista 2202, Cj. 66 - Sao Paulo
- SP 01310-932
BRAZIL
contato@pgtbrasil.com
guilherme@polishtextilegroup.com
phone: +55 (31) 99599-0305



PGT TURKEY TEKSTIL TICARET LTD. STI.
Otello Kamil Sokak Erler Apt. 14/10, Şişli /
Istanbul 34-360
oguzhan@polishtextilegroup.com
+90 507 334 32 52
+48 602 697 039



PTG IBERICA LDA
Rua Comendador Brandão, 484
4495-375 Póvoa de Varzim
PORTUGAL
office.pt@polishtextilegroup.com



PGT UKRAINE LTD
Chernivtsi city
Golovna str. build. 59
UKRAINE
ivan@polishtextilegroup.com
phone: +38 050 671 50 24

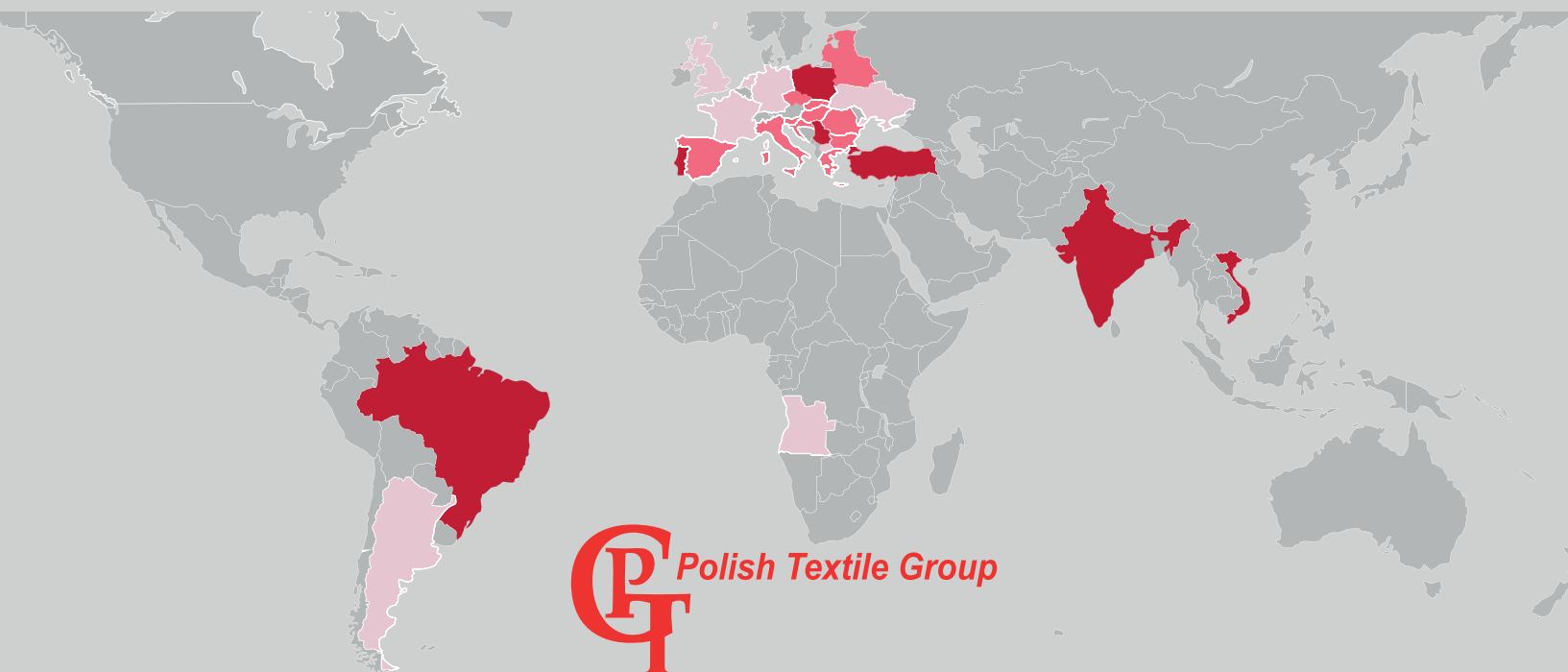
phone: +351 252 147 972



PEGETE ORIENT PVT LTD.
90B, Delhi - Jaipur Expy,
Udyog Vihar, Sector 18,
Gurugram, Haryana 12200
INDIE
sandeep@polishtextilegroup.com
phone: +91-96509 65835



PGT VIETNAM COMPANY LIMITED
Tho Quang Hamlet, Tho Vinh
Commune, Kim Dong District,
Hung Yen Province
VIETNAM
thu@polishtextilegroup.com
phone: (+84) 913059888



**ALWAYS STAY
UP TO DATE!**

4WRK[®]
we care

Instagram 



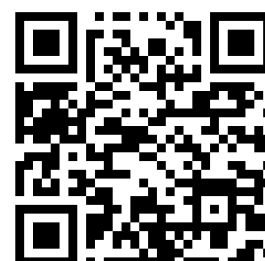
Android 



iOS 



B2B platform



Facebook 

